

# USER MANUAL

Version 1.0

## Prices To Web

### P2W

Version 2021.02.05.01

March 2021

**Submitted to:**

DLA Energy  
J-6FSA  
8725 John J. Kingman Rd.  
Ft. Belvoir, VA 22060

Attn: Ruby Pazos  
[Ruby.Pazos@dla.mil](mailto:Ruby.Pazos@dla.mil)

**Submitted by:**

Nelson & Associates (CNA)  
150 Howie Road  
Big Timber, MT 59011

# Table of Contents

- SECTION 1. Scope of the User Manual ..... 4
  - 1.1 Document Overview ..... 4
    - 1.1.1 Document Navigations Conventions ..... 4
  - 1.2 Application Overview ..... 4
    - 1.2.1 Application Navigation Conventions ..... 5
- SECTION 2. Screens and Instructions ..... 7
  - 2.1 P2W Access ..... 7
  - 2.2 Data Filtering Options ..... 9
    - 2.2.1 Most Recent Price / Price History ..... 9
    - 2.2.2 Date Range ..... 9
  - 2.3 Select Contracts Grid ..... 10
  - 2.4 Reports ..... 13
    - 2.4.1 Tabular Report ..... 13
    - 2.4.2 Spreadsheet Report ..... 14
  - 2.5 Additional Menu Options ..... 16
  - 2.6 Error and Warning Messages ..... 17
    - 2.6.1 No Contracts Selected Error ..... 17
    - 2.6.2 Too Many Price Records Error ..... 18
    - 2.6.3 Invalid Character Error ..... 18
    - 2.6.4 Error Getting Tabular Data ..... 18
- APPENDIX A - Terms and Abbreviations ..... 19
- APPENDIX B - References ..... 31
- APPENDIX C - Application Release History ..... 32

# Table of Figures

Figure 1	Show X Entries Pull-down and Page Navigation .....	5
Figure 2	Session Timeout Warning .....	6
Figure 3	EPST Log Out Success Screen .....	6
Figure 4	DOD Access Message .....	7
Figure 5	Splash Page .....	8
Figure 6	Prices To Web Report Options / Contract Selection Screen.....	8
Figure 7	Date Range Calendar Option .....	10
Figure 8	Prices To Web Select Contracts Grid.....	10
Figure 9	Prices To Web Contract Selected .....	11
Figure 10	Prices To Web Grid Column Filtering .....	12
Figure 11	Prices To Web Select Contract Grid Buttons.....	12
Figure 12	Reports Menu Options .....	13
Figure 13	Tabular Report Screen.....	13
Figure 14	Prices To Web Grid Filtering .....	14
Figure 15	Prices To Web Spreadsheet Report Example .....	15
Figure 16	Contract Line Prices Screen – Menu Options.....	16
Figure 17	Additional Menu Options .....	16
Figure 18	Standard Prices Pop-up Screen.....	17
Figure 19	No Contracts Selected Error .....	17
Figure 20	Too Many Price Records Error.....	18
Figure 21	Invalid Character Error .....	18
Figure 22	Error Getting Tabular Data .....	18

# SECTION 1. **SCOPE OF THE USER MANUAL**

## **1.1** Document Overview

This document, the Prices To Web (P2W) User Manual (UM) describes the various steps taken to use the Prices To Web application from an end-user's perspective. This UM is applicable to the latest version of the Bulk OET application as found in [Appendix C](#).

### 1.1.1 Document Navigations Conventions

This document contains many hyperlinks. To navigate back to your original section after clicking on a hyperlink within this document, use *Alt+left arrow*.

A navigation pane is provided, on the left side of the document, containing heading links which you can use to easily get to a specific section containing the information you want. The heading links displaying an arrow to the left are expandable, by clicking the arrow, to display related sub-sections.

**\*NOTE:** If the Navigation Pane is not displayed upon opening the .pdf, the following steps will display it: In the Browser window, click **File > Properties**; on the **Initial View** tab of the **Properties** screen, select *Bookmark Panel and Page* in the **Navigation tab** field drop-down, and click the **OK** button. Save and close the .pdf. The Navigation Pane will be displayed upon re-opening the .pdf.

## **1.2** Application Overview

The Prices To Web application allows users to view all price updates for DLA Energy Contract Lineitems (CLINs). Contract price updates from price services (e.g., OPIS, PLATTS, etc...) are processed daily and the escalated prices (hereafter in this document referred to as Prices) are loaded into the Prices To Web data tables. P2W gives users a web interface through which to query, display and produce reports of these data. These reports provide escalated pricing data, by Contract and CLIN, for use by Vendors, Contract Specialists, and other interested parties (in accordance with the Freedom of Information Act [FOIA], these data are available to the public), for instance:

- Escalated pricing data aids Vendors in determining the price to invoice the government for delivery of their Product on a particular date.
- Perspective vendors can review historical pricing data for a Product at a particular location to aid in the preparation of a Solicitation response.
- Contract Specialists review historical pricing data and syncing of the escalated prices from the pricing services.

This version of the Prices To Web application was designed to replace the previous version which was limited in its functionality. This new version includes an updated web interface with enhanced filtering and sorting capabilities and a spreadsheet report option.

## 1.2.1 Application Navigation Conventions

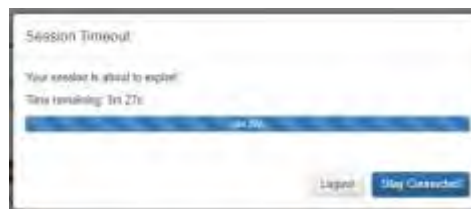
Throughout the various Prices To Web screens, the following navigation conventions are used to assist the user:

- Web Browser
  - Applications must be accessed through a DLA approved browser, which as of the writing of this document does not include Mozilla Firefox.
- Menus/Links
  - A menu, located on the left of the screen, is used to navigate certain functions for the application.
- Column Sorting.
  - Arrow(s) in the column title indicate the data are sortable by that column. Clicking the title/arrow reorders data alphabetically/ numerically. The up or down direction of the arrow indicates which direction the data are sorted (ascending or descending).
- Grid Column Filter Options/Search
  - Filtering/search text boxes at the bottom of the columns allow for the grid to display only filtered items. The filtering is dynamic, meaning when a letter is typed, the grid is re-displayed based on the entry. It is also cumulative, where the grid can be filtered on multiple fields. The grid displays records that match the string regardless of where it is in the entry in the column. For instance, entering “18D” in the **Contract Number** filter box will match any contract numbers with the string “18D” anywhere in the entry. The matching is NOT case sensitive.
- Grid Display Options
  - The number of entries/records displayed on a page can be selected using the pull down menu (Figure 1). The default is 10.
  - If more records exist based on the filter selections than can be displayed on a page in the grid, then page navigation can be accomplished by the buttons in the upper right corner of the grid (Figure 1).



**Figure 1 Show X Entries Pull-down and Page Navigation**

- Record Count
  - Displayed at the bottom left of a screen specifying the number of records shown, e.g., *1 – 20 of 60 entries shown.*
- Session Time Out
  - If a user is idle or performs no actions for a specified amount of time, they will automatically be logged out of the application. A warning pop-up (**Error! Reference source not found.** and **Error! Reference source not found.**) will be displayed with a countdown for a period of time prior to the log out giving the user the opportunity to continue with the session or log out.



**Figure 2 Session Timeout Warning**

- Privacy and Security Notice Hyperlinks
  - At the bottom of every webpage and window is a link to the DoD Privacy Security Policy Statement. This page can be accessed by clicking the “**Click Here**” link
- Log Out
  - A **Log Out** link appears at the bottom of the menu. This link should **ALWAYS** be used to exit the application taking you to the **EPST Log Out Success** screen (Figure 3). From here you must close your browser



**Figure 3 EPST Log Out Success Screen**

## SECTION 2. SCREENS AND INSTRUCTIONS

There are two main pages and a spreadsheet report option in the Prices To Web application:

- Report Options / Contract Selection Screen - [Section 2.2](#)
- Tabular Report Screen - [Section 2.4.1](#)
- Spreadsheet Report - [Section 2.4.2](#)

A list of error and warning messages that can occur in P2W will be detailed in [Section 2.6](#).

**\*NOTE:** The Prices To Web application is designed to be navigated by using the provided hyperlinks. You should not use the browsers *Back* button at any time unless instructed to do so.

### 2.1 P2W Access

To access the P2W application navigate to [https://cis.energy.dla.mil/energy\\_cis/](https://cis.energy.dla.mil/energy_cis/) in a DLA Energy approved [web browser](#). The **DOD Access Message** pop-up (Figure 4) will be displayed which you must read and acknowledge by clicking the **OK** button.

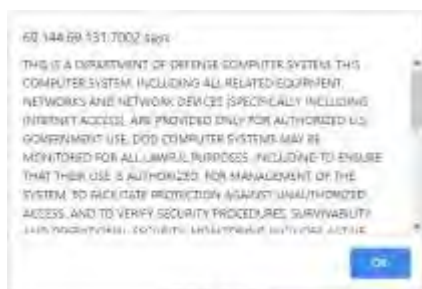


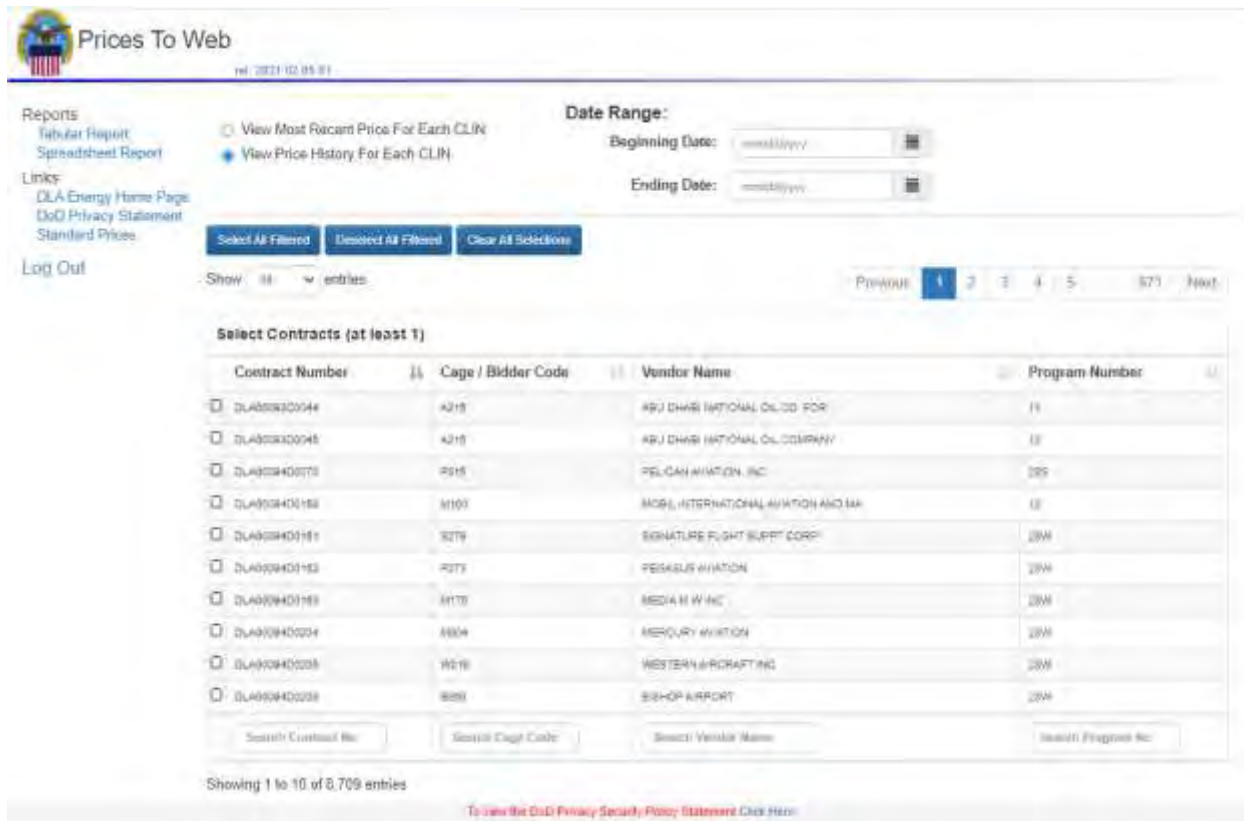
Figure 4 DOD Access Message

The pop-up will close, and you can then click on the **Prices To Web** link on the **Splash Page** (Figure 5). A **User Manuals** link and help links are also available on this page.



**Figure 5 Splash Page**

Upon clicking the **Prices To Web** link a screen of report options / contract selection options (Figure 6) is displayed where you define the parameters for your report query.



**Figure 6 Prices To Web Report Options / Contract Selection Screen**



## 2.2 Data Filtering Options

On the report options / select contract(s) screen (Figure 6), there are multiple means to filter the data you want to include in the report:

- [View Most Recent or View Price History for Each CLIN:](#)
- [Specify a Date Range](#)
- [Select Contract\(s\)](#)
  - [Grid Sort by Column](#)
  - [Grid Filter By Column](#)

### 2.2.1 Most Recent Price / Price History

Select the corresponding radio button to filter the data in the report to display either the most recent or all (price history) of the price modifications, based on the price modification effective date, for each contract line item (CLIN) of the selected [contract\(s\)](#).

The **View Price History For Each CLIN** option lists all price modifications for every CLIN for all contracts selected. Prices can be modified on a daily basis for some CLINs, so depending on how old the contract is, each CLIN can potentially have hundreds or even thousands of price records. That is something to keep in mind when selecting the **View Price History For Each CLIN** option. There is a [limit](#) to how many records can be included, especially when creating a spreadsheet. When creating a price history report, it is best to create it for a [single contract](#) at a time or to strictly limit the [date range](#) for the report.

The **View Most Recent Price For Each CLIN** option only lists the most recent price for each CLIN selected in the report. It is important to note that this option lists the most recent price within the [date range](#), if any, specified. Since only one price for each CLIN is included in this type of report, it is more likely to be able to create a report with multiple contracts selected and not exceed the maximum number of records allowed for the report.

### 2.2.2 Date Range

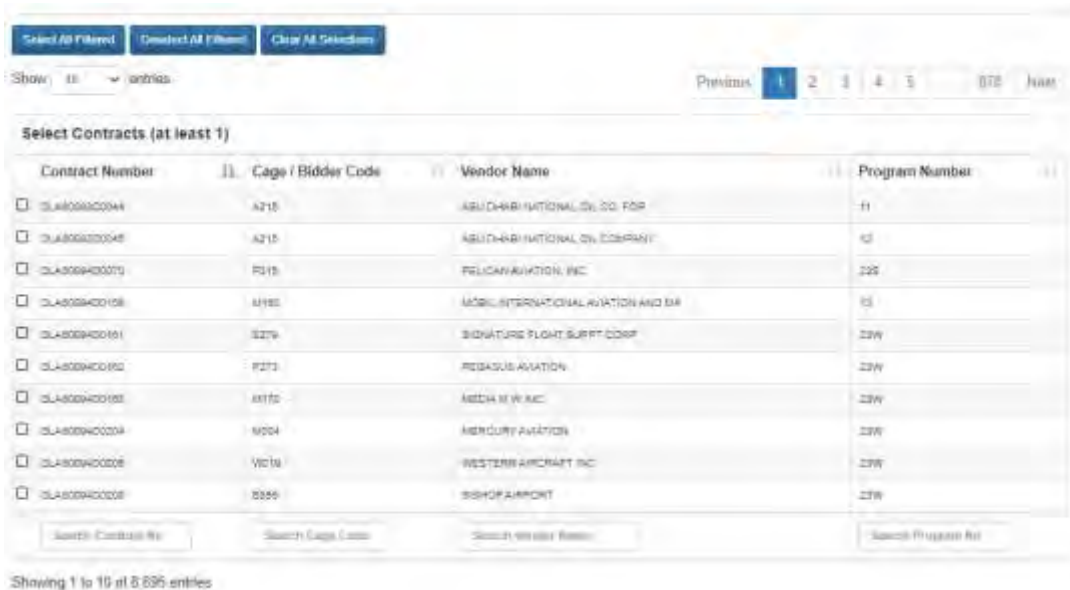
You can specify a range of price modification dates for the CLINs included in the report by either directly typing the date in the appropriate text box in **mm/dd/yyyy** format or selecting a date via the calendar option located to the right of the text boxes (Figure 7). If no **Beginning Date** is specified, then the report will contain prices going back to the beginning of the selected contract(s). If no **Ending Date** is specified, then the report will contain prices up to the latest price records for each CLIN. **Keep in mind that if an Ending Date is specified then the most recent prices listed in the report may not be the most recent prices overall for any given CLIN.**



**Figure 7 Date Range Calendar Option**

### 2.3 Select Contracts Grid

Prices To Web can include contracts in Bulk Fuels, PC&S/Ground Fuels, Ships Bunkers Fuels, and IntoPlane Fuels CBUs. There are thousands of contracts with price data, so [filtering](#) and/or [sorting](#) the grid will be necessary to find the contract(s) that you wish to select. Due to the large number of price modification records for many of the CLINs, selecting too many contracts to include will result in the report not being able to be created, invoking the error message in Figure 20. If you are selecting multiple contracts, it is advised to use the other filtering options provided (i.e., [grid display](#), [recent / historical](#), [date range](#)). In order to create a Price Report, [at least one](#) contract must be selected.



**Figure 8 Prices To Web Select Contracts Grid**

Select individual contracts simply by clicking the box in the left-most column of the grid for the contract record in question. The box will then be checked and the selected row(s) will have a dark blue background (Figure 9). The record count status at the bottom of the grid will also show how many records (contracts) are currently selected. Since not all contracts are shown on a given page, this is a good way of keeping track of the number of contracts that have been selected.

Contract Number	Cage / Bidder Code	Vendor Name	Program Number
<input type="checkbox"/> SP0001001203	BULK4	AMFUELE-INTL INC	1.0P
<input checked="" type="checkbox"/> SP0001001204	TRAIL	ZUMA CONSULTING LLC	1.0P
<input type="checkbox"/> SP0001001205	SEVR9	US 21 INC DBA US21	1.0P
<input type="checkbox"/> SP0001001206	SEVC7	UNITED CAPITAL INVESTMENT GROUP	1.0P
<input type="checkbox"/> SP0001001207	SEV96	HTH GENERAL TRADING LLC	1.0P
<input type="checkbox"/> SP0001001208	SCUP8	RUBS ENERGY OIL/OUT	1.0P
<input type="checkbox"/> SP0001001209	SOAB1	NATIONAL FUEL INC DBA CORPORATION	1.0P
<input type="checkbox"/> SP0001001210	01101	WTONEMW CAPITAL LP	1.0P
<input type="checkbox"/> SP0001001211	U1A12	COMGLAR PARTNERS LTD DBA	1.0P
<input type="checkbox"/> SP0001001212	SHCS2	WORLD FUEL SERVICES TRADING DMCC	1.0P

Showing 1 to 10 of 14 entries (Shared from 6,595 total entries) 1 row selected

**Figure 9 Prices To Web Contract Selected**

More than one contract can be selected, but some contracts can have dozens or even hundreds of CLINs each with hundreds of price records. If you want to view prices for multiple contracts, it is advised to either select one contract at a time or use the filtering options (Section [2.2.1](#) and [2.2.2](#)) to constrict the report data. Probably the most useful tool to find your desired contract(s) in the grid is to use the [filter by column\(s\)](#) option as shown in Figure 10.

Select All Filtered   Deselect All Filtered   Clear All Selections

Show 10 entries   Previous 1 2 Next

Select Contracts (at least 1)

Contract Number	Cage / Bidder Code	Vendor Name	Program Number
<input type="checkbox"/> SPE00518D1253	6V4J4	AMFUELS INTL INC	1.8F
<input type="checkbox"/> SPE00518D1254	7WVWT	ZURA CONSULTING, LLC	1.8F
<input type="checkbox"/> SPE00518D1255	1EMR2	US 21, INC, DBA US21	1.8F
<input type="checkbox"/> SPE00518D1256	82VCT	UNITED CAPITAL INVESTMENT GROUP	1.8F
<input type="checkbox"/> SPE00518D1257	5W568	HRH GENERAL TRADING LLC	1.8F
<input type="checkbox"/> SPE00518D1258	SCUR4	RUBIS ENERGIE DISTRIBUTI	1.8F
<input type="checkbox"/> SPE00518D1259	SO4B1	NATIONAL FUEL INC DBA CORPORATION	1.8F
<input type="checkbox"/> SPE00518D1260	U11D1	STONEWIN CAPITAL LP	1.8F
<input type="checkbox"/> SPE00518D1265	U14V9	CONSILIARI PARTNERS LTD DBA	1.8F
<input type="checkbox"/> SPE00518D1266	SHC52	WORLD FUEL SERVICES TRADING DMCC	1.8F

SPE005   Search: Cage Code   Search: Vendor Name   1.8F

Showing 1 to 10 of 14 entries (filtered from 8,695 total entries)

**Figure 10 Prices To Web Grid Column Filtering**

You can select or deselect multiple contracts via the three buttons at the top of the grid as follows: (Figure 11)

1. Click the **Select All Filtered** to mark (check) all contracts that meet the currently set [grid filtering options](#) as *selected*.
2. Click the **Deselect All Filtered** to mark (uncheck) all of the contracts that meet the currently set filtering options as *unselected*. **\*Note: any selected contracts that are not in the current filtered option will remain selected.** To mark all contracts unselected, use the button option **Clear All Selections**.
3. **Clear All Selections** – This button will mark all selected contracts as unselected, regardless of the grid filtering options currently specified.



**Figure 11 Prices To Web Select Contract Grid Buttons**

After selecting the contracts you are interested in, you then select the type of report (e.g., Tabular, Spreadsheet) you want from the **Reports** links.

## 2.4 Reports

The Prices report can be created in a Tabular HTML format, as well as a comma separated value (CSV) text file that can be opened in Microsoft Excel and other spreadsheet applications. Select either [Tabular Report](#) or [Spreadsheet Report](#) from the links under the **Reports** menu (Figure 12) at the left side of the reports options / contract selection screen (Figure 6).



Figure 12 Reports Menu Options

### 2.4.1 Tabular Report

Click the **Tabular Report** link to create a report displaying the price data (based on your [filtering options](#) and [contract selections](#)) in an HTML web page format (Figure 13). Should you select the **Tabular Report** option prior to selecting at least one contract, you will receive the error message displayed in Figure 19 prompting you to do so.

A screenshot of the 'Prices To Web' application interface. The page title is 'Prices To Web'. Below the title, there are navigation links: 'Home', 'About Us', 'Contact Us', 'Privacy Policy', and 'Disclaimer'. The main content area is titled 'PRICES GRID' and contains a table with the following columns: Contract No., Mod No., Item No., Product, Price/Gallon, Effective Date, and Posted Date. The table contains 10 rows of data. At the bottom of the table, there are several filter buttons: 'Contract No.', 'Mod No.', 'Item No.', 'Product', 'Price/Gallon', 'Effective Date', and 'Posted Date'. The page also shows a 'Page 1 of 1' indicator and a 'Print' button.

Figure 13 Tabular Report Screen

Upon first display of this **PRICES GRID** screen (Figure 13), the grid contains all of the contract line price records that meet the filtering rules and contract selections that you made on the report options screen (Figure 6). The grid displays data specific to a CLIN's price modification including the Contract Number, Contract Modification Number,

Contract Line Item Number, Product Code, Price Per Gallon relevant to the mod in question, Mod Effective Date, and the Date the price modification was posted. Once displayed you can use the [grid display options](#), [sorting options](#), and [filters](#) to change what records are displayed and how they are displayed; however, the data cannot be edited. The example in Figure 14 shows the **PRICES GRID** filtered via **Item No** for **0002**.

Contract No	Mod No	Item No	Product	Price/Gallon	Effective Date	Posted Date
SPE6051801250	PA0559	0002	JA1	4.021850	05/20/2020	05/25/2020
SPE6051801250	PA0558	0002	JA1	4.021850	05/27/2020	05/28/2020
SPE6051801250	PA0557	0002	JA1	4.021850	05/26/2020	05/27/2020
SPE6051801250	PA0556	0002	JA1	4.021850	05/25/2020	05/26/2020
SPE6051801250	PA0556	0002	JA1	4.021850	05/24/2020	05/25/2020
SPE6051801250	PA0558	0002	JA1	4.021850	05/22/2020	05/23/2020
SPE6051801250	PA0555	0002	JA1	4.021850	05/21/2020	05/22/2020
SPE6051801250	PA0554	0002	JA1	4.021850	05/20/2020	05/21/2020
SPE6051801250	PA0553	0002	JA1	4.021850	05/19/2020	05/20/2020
SPE6051801250	PA0552	0002	JA1	4.021850	05/18/2020	05/19/2020

Showing 1 to 10 of 1,409 entries (Filtered from 4,522 total entries)

**Figure 14 Prices To Web Grid Filtering**

After viewing the report, and sorting or filtering as desired, you can click the **Create Spreadsheet** link (on the left-hand side of the screen) which will create the Prices Report in an Excel Spreadsheet format ([Section 2.4.2](#) below) based on your filtering selections in the **Prices Grid** (Figure 14).

## 2.4.2 Spreadsheet Report

The Spreadsheet report can be created from two locations in Prices To Web:

- 1) Report Options / Contract Selection screen – Click the **Spreadsheet Report** link in the **Reports** menu (Figure 12) to create the Prices report in a spreadsheet format based on your filtering selections on that screen (Most Recent/History [[Section 2.2.1](#)], Date Range [[Section 2.2.2](#)], and Contract Selection [[Section 2.3](#)]). At least one contract must be selected to create the report from this screen; otherwise, you will receive an error message (Figure 19) prompting you to do so.
- 2) Tabular Report Screen – Click the **Create Spreadsheet** link in the menu on the left-hand side of the Tabular Report screen (Figure 17) to create a spreadsheet report based on the current filter options that you have established in the **PRICES GRID**.



In either case, the report will have the same format (Figure 15), only the records in the report will differ depending on your filtering selections in the Prices Grid (Figure 14). This allows you to further filter the selected contract price records on any columns in the **Prices Grid**, such as **Item No** or **Product**, before creating the spreadsheet. Only those records that appear in the filtered **Prices Grid** will be included in the spreadsheet. Like the HTML report format, the spreadsheet will contain data specific to a CLIN's price modification including the Contract Number, Contract Modification Number, Contract Line Item Number, Product Code, Price Per Gallon relevant to the modification in question, Mod Effective Date, and the Date the price modification was posted.

	A	B	C	D	E	F	G
1	Price History Report Generated on 01/30/2021						
2	Contract No	Mod No	Item No	Product	Price/Gallon	Effective Date	Posted Date
3	DLA60094D0070	PA0058	1903AR	IAA	1.1337	3/25/1996	10/22/1998
4	DLA60094D0070	PA0058	1903AR	IAA	1.0637	3/18/1996	10/22/1998
5	DLA60094D0070	PA0058	1903AR	IAA	1.0637	3/11/1996	10/22/1998
6	DLA60094D0070	PA0058	1903AR	IAA	1.0787	3/4/1996	10/22/1998
7	DLA60094D0070	PA0058	1903AR	IAA	1.0737	2/26/1996	10/22/1998
8	DLA60094D0070	PA0058	1903AR	IAA	1.0662	2/19/1996	10/22/1998
9	DLA60094D0070	PA0058	1903AR	IAA	1.0587	2/12/1996	10/22/1998
10	DLA60094D0070	PA0058	1903AR	IAA	1.0537	2/5/1996	10/22/1998
11	DLA60094D0070	PA0058	1903AR	IAA	1.0887	1/29/1996	10/22/1998
12	DLA60094D0070	PA0058	1903AR	IAA	1.0987	1/22/1996	10/22/1998
13	DLA60094D0070	PA0058	1903AR	IAA	1.1312	1/15/1996	10/22/1998
14	DLA60094D0070	PA0058	1903AR	IAA	1.1037	1/8/1996	10/22/1998
15	DLA60094D0070	PA0058	1903AR	IAA	1.0937	1/1/1996	10/22/1998
16	DLA60094D0070	PA0058	1903BR	IAA	1.1737	3/25/1996	10/22/1998
17	DLA60094D0070	PA0058	1903BR	IAA	1.1037	3/18/1996	10/22/1998
18	DLA60094D0070	PA0058	1903BR	IAA	1.1037	3/11/1996	10/22/1998
19	DLA60094D0070	PA0058	1903BR	IAA	1.1187	3/4/1996	10/22/1998

**Figure 15 Prices To Web Spreadsheet Report Example**

The spreadsheet report is actually created as a comma separated value (CSV) text file. When the report is created you may be given the option of opening the report or saving it (Figure 16), depending on your browser and whether you have Excel installed. If you have Microsoft Excel installed on your computer, it will automatically display in this format. Other spreadsheet applications can also display files in this format.



**Figure 16 Contract Line Prices Screen – Menu Options**

Upon opening the spreadsheet you have the opportunity then to make any formatting changes and save or print it like any spreadsheet. You also have the option to save the file directly without opening it.

Click the **Return to Report Options** link, in the menu on the left-hand side of the **Tabular Report** screen (Figure 17), to return to the report options / contract selection screen (Figure 6) should you want to edit your selections (all of your previous selections and settings on that screen will be retained). You should use this link as opposed to using the browser's back button.

## 2.5 Additional Menu Options

The menu list at the left side of the report options / contract selection screen) and the **Tabular Report** screen provides you with additional link options (Figure 17).



**Figure 17 Additional Menu Options**

- **DLA Energy Home Page** – This link opens the Defense Logistics Agency (DLA) Energy home page in a new browser window. (Prices To Web is a DLA Energy application). From the home page you can conveniently navigate to various DLA information, e.g., Solicitations; how to do business with DLA, etc.
- **DoD Privacy Statement** – This link opens the Department of Defense (DoD) Privacy Statement web page in a new browser window. This Privacy Statement applies to most DoD web pages and applications.



- **Standard Prices** – This option displays a pop-up window (Figure 18) that explains the DoD Standard Price of Fuel as it relates to the Prices To Web application.



**Figure 18 Standard Prices Pop-up Screen**

## 2.6 Error and Warning Messages

### 2.6.1 No Contracts Selected Error

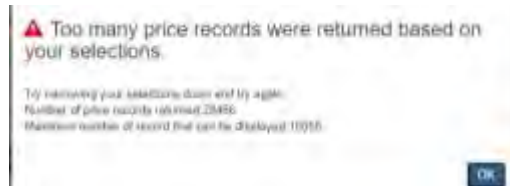
This error (Figure 19) occurs when you click either the **Tabular Report** or **Spreadsheet Report** link in the menu options (Figure 12) without first selecting at least one contract. One or more contracts must be selected before creating a Prices Report in any format.



**Figure 19 No Contracts Selected Error**

## 2.6.2 Too Many Price Records Error

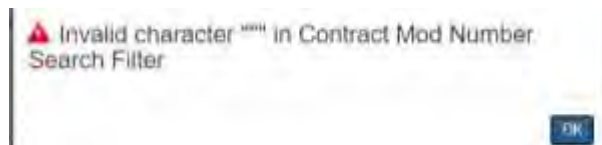
This error (Figure 20) occurs when you click either the **Tabular Report** or **Spreadsheet Report** link in the menu options (Figure 12) and there are too many records to create the report. There is a limitation on how many records can be displayed in a grid and how many can be included in a CSV file. This number may vary and will be updated if the limitations change. To prevent this error, try selecting fewer contracts at a time to create the report.



**Figure 20 Too Many Price Records Error**

## 2.6.3 Invalid Character Error

This error (Figure 21) occurs either when the user inputs an invalid character into any of the filter/search boxes at the bottom of the columns in the **Prices Grid** (Figure 14). Most characters are allowed, however, there may be some that are not due to technical issues, such as a double quote (“). If this error occurs, remove the character and continue.



**Figure 21 Invalid Character Error**

## 2.6.4 Error Getting Tabular Data

This error (Figure 22) occurs when the **Tabular Report** (Figure 13) is loading and there is an error when trying to load the Price data into the grid. The page will be displayed with no records in the grid. If this is a temporary issue, you can return to the report options / contract selection screen (Figure 6) and try again. If the issue persists, the user should note exactly what they were attempting to do in the system and contact the help desk using the link on the **Splash** page (Figure 5).



**Figure 22 Error Getting Tabular Data**

## APPENDIX A - Terms and Abbreviations

<u>Acronym/Term</u>	<u>Meaning</u>
24/7	Twenty-four hours a day, seven days per week
8A	A Minority-Owned or Other Disadvantaged Business (named for Section 8A of the Small Business Act)
ACL	Access Control Limit
Activity	Military Installation or Region with a fuel requirement
ACART	Architecture Compliance and Requirements Traceability. ACART is a web-based compliance tool that can be used by government and commercial enterprises to allow users to show compliance against an established set of requirements, whether from an enterprise architecture or from a regulatory compliance checklist.
Additive	A fuel additive is an ingredient added to military fuels to achieve certain desirable properties or specifications. (ex: FSII, SDA, CI)
ADP	Automatic Data Processing
ADPE	Automatic Data Processing Equipment
AEM	Atlantic Europe Mediterranean – geographical Buy name
AIS	Automated Information System
AMPS	Account Management and Provisioning System
Arc	Possible Single-leg move from one SPLC to the next SPLC
ARIS	Architecture of Integrated Information Systems (ARIS) is an approach to enterprise modeling. It offers methods for analyzing processes and taking a holistic view of process design, management, work flow, and application processing. The ARIS approach provides a generic methodological framework and a business process modeling tool.
ATO	Authority to Operate
AVEDS	Automated Voucher Examination and Disbursement System
B	Barge
B & F	Best and Final (bid)
Barge Grid	Price scaling – the more gallons a ship takes on the lower the price
BEM	Bid Evaluation Model
Bid/Offer	Synonymous terms, here used to describe industry proposal to supply fuel product under contract with DLA Energy. Firms submitting such a bid/offer are called Offerors.
BID	Bulk Inventory Distribution group/manager
BIT	Bulk Inventory Tankers group/manager
BLOB	Binary Large Object
BSA	Base Level Systems Application
BOA	Basic Ordering Agreement – yes or no answer by a supplier to indicate whether or not they want to bid on natural gas contract
BRMP	Base Reference Market Price – Used in calculating the EPA
BSM-E	Business Systems Modernization – Energy (assimilated into Energy Convergence [EC] in 2014)
Bunkers	Acronym for fuel supplied to a ship by a Port
Buy	Geographical Area composed of several Purchase Programs
C	Rail Car
C&A	Certification and Accreditation
CA	Certifying Authority

CAC	Common Access Card
CAGE Code	Commercial And Government Entity Code
Capitalized	A capitalized fuel order is one that is DLA Energy-owned.
CBU	Commodity Business Unit
CCB	Configuration Control Board
CCR	Central Contractor Registration – Database of basic business information for contractors that want to do business with the US Department of Defense (DoD).
CFM	Common Freight Manager – database that stores approved rates
CI	Corrosion Inhibitor fuel additive
CINC	Commander-In-Chief
CIS	Contract Information System
CLIN	Contract Line Item Number
CM	Configuration Management
CMB	Configuration Management Board
CMWG	Configuration Management Working Group
CNSNE	Consignee
CO	Contracting Officer
COCO	Contractor Owned/Contractor Operated
COCOM	Combatant Command
COG	Customer Organized Groups – used in PC&S for grouping geographical regions in CONUS
Common Carrier	Transportation company which sends bulk fuel by Truck, Pipe or Rail car
COMPUSEC	Computer Security
COMSEC	Communications Security
Contractor	Fuel Supplier
CONUS	Continental U.S.
COOP	Continuity of Operations
COTS	Commercial Off-the-Shelf
Cron	Cron is a time-based job scheduler in Unix-like computer operating systems. Cron enables users to schedule jobs (commands or scripts) to run periodically at certain times or dates.
CS	Contracting Specialist
CSCI	Computer Software Configuration Item
CSV	Comma-Separated Value. File format read by Excel.
DAA	Designated Approving Authority
DAC	Discretionary Access Controls
DBA	Database Administrator
DBDD	Database Design Description
DBMS	Database Management System
DCQ	Daily Contract Quantity
DD1155	“Order for Supplies or Services” Form Example:

DD250-1 Material Inspection and Receiving Report (load or discharge)

This form is used to report the receipt and inspection of material. It includes sections for:

- 1. Material Description (Name, Quantity, Unit, etc.)
- 2. Inspection Details (Inspected by, Date, Location, etc.)
- 3. Material Condition (Inspected, Found, etc.)
- 4. Remarks (Description of material, location, etc.)
- 5. Signature and Date (Inspector, Receiver, etc.)

**Material Inspection and Receiving Report (load or discharge)**  
**Example:**

DD250

DD250-1 Material Inspection and Receiving Report (load or discharge) Example

This form is filled out with specific data for a material inspection. It includes sections for:

- 1. Material Description (Name, Quantity, Unit, etc.)
- 2. Inspection Details (Inspected by, Date, Location, etc.)
- 3. Material Condition (Inspected, Found, etc.)
- 4. Remarks (Description of material, location, etc.)
- 5. Signature and Date (Inspector, Receiver, etc.)

DD250-1 Material Inspection and Receiving Report (load or discharge) Example

This form is filled out with specific data for a material inspection. It includes sections for:

- 1. Material Description (Name, Quantity, Unit, etc.)
- 2. Inspection Details (Inspected by, Date, Location, etc.)
- 3. Material Condition (Inspected, Found, etc.)
- 4. Remarks (Description of material, location, etc.)
- 5. Signature and Date (Inspector, Receiver, etc.)

DD250-1

**Material Inspection and Receiving Report for a waterborne move**  
**Example:**



DDL	Data Definition Language
DECC	Defense Enterprise Computing Center
Dedicated	Pipeline controlled by the refiner going directly to DFSP
Deep Freeze	Bulk Fuel Regional Buy name referring to Alaska
Destination Offer	An offer to provide fuel product to the government (i.e. the government assumes ownership), FOB at a “downstream” facility – DFSP or an end-user location (military base of activity)
DESC	Defense Energy Support Center – renamed “DLA Energy” in July 2010 in support of the Defense Logistics Agency’s “We are DLA” initiative.
DESC-S	Defense Energy Support Center Systems Office – changed to DLA J6F
DESC-T	Defense Energy Support Center Business Integration Office – assimilated under code “O”
DFAMS	Defense Fuels Automated Management System – accounting system being replaced by Oracle Financials
DFAS	Defense Finance and Accounting System
DFR	Defense Fuel Region (regional office)

DFSP	Defense Fuel Supply Point / Tank Farm – government owned intermediate point along distribution route
DIACAP	DoD Information Assurance Certification and Accreditation Process
DID	Date Item Description
DINS	Defense Internet NOTAM Service
DISA	Defense Information Systems Agency
DLA	Defense Logistics Agency
DLA Energy	New name for DESC as of July 2010
DLA Energy-B	B – Bulk
DLA Energy-P	P – Posts, Camps & Stations
DLA Energy-R	R – Finance
DLA Energy-RB	RB – Finance / Budget
DLL	Dynamic Link Library
DMZ	Demilitarized Zone or Data Management Zone or Demarcation Zone. The purpose of a DMZ is to add an additional layer of security to an organization's Local Area Network (LAN); an external attacker only has access to equipment in the DMZ, rather than the whole of the network.
DoD	Department of Defense
DODAAC	Department of Defense Activity Address Code – a six position code that uniquely identifies a unit, activity, or organization that has the authority to requisition and/or receive material. The first position designates the particular Service/Agency element of ownership.
DODAAD	Department Of Defense Activity Address Directory – is defined as a file of activity address codes (AACs) and corresponding organization address and related address data.
DoDD	Department of Defense Directive
DoDI	Department of Defense Instruction
DPA	Distribution Plan Authority
DPAs	Authorized Distribution Plans
DPATS	Defense Logistics Agency Portfolio and Architecture Tool (DPATS). Formerly ARIS/ACART/ERWIN
DRDB	Data Repository Data Base
DRI	Defense Reform Initiative – calls for a paperless/on-line fuel ordering system
DRO	Domestic Route Order – the authorized routing to move fuel from point to point
DS	Database Specification
DSIO	DLA Systems Integration Office
DUNS	Data Universal Numbering System - A unique nine-digit identification sequence, which provides unique identifiers of single business entities, while linking corporate family structures together.
DWC	Defense Working Capital
East Gulf	Bulk Fuel Regional Buy name
EBS	Enterprise Business System
EC	Energy Convergence
ECMP	Enterprise Configuration Management Plan
ECRT	Employee Activity Guide for Labor Entry (EAGLE) Request Tracker Enterprise Change Request Tool (replaced the ITS tool in 2013)
ED	Energy Downstream – repository of data for orders, lifts and receipts – renamed to Oracle Energy Downstream (OED)
EDC	Enterprise Data Center – consolidation of DLA global information technology data centers into two EDCs
EDC EAST	Enterprise Data Center in Columbus Ohio
EDI	Electronic Data Interchange
EFB	Emergency Fuel Buy

EFT	Electronic Funds Transfer
eMASS	Enterprise Mission Assurance Support Service – Department of Defense's (DoD) recommended tool for information system Certification and Accreditation (C&A). *replaced by RMF 2016
EPA	Economic Price Adjustment – difference between the contractor's bid price and the Base Reference Market Price
EPST	Energy Procurement Support Tools
ERP	Enterprise Resource Planning
Erwin	CA ERwin Data Modeler (ERwin) is a software tool for data modeling (data requirements analysis, database design etc.) of custom developed information systems, including databases of transactional systems and data marts.
Escalators	Price adjustment factors to be used during the life cycle of fuel contracts.
F-76	MIL-SPEC Navy distillate fuel normally used in shipboard diesels, gas turbines and boilers. F-76 has very tight specification and storage/handling quality control requirements.
FAR	Federal Acquisition Regulation
FAS	Fuels Automated System (renamed to BSM-E in 2004)
FCC	Fuels Control Center – part of FES
FD	Functional Description
FEDAAC	Federal Activity Address Code
FEH	FAS Enterprise Hub (known as FES)
FES	Fuels Enterprise System
FET	Federal Excise Tax
FII	Facilities Inventory Division Section 1
FIPS	Federal Information Processing Standard
Firm	Type of pricing for natural gas when supply priority is set to the highest standard
FISCAM	Federal Information System Controls Audit Manual
FISMA	Federal Information Security Management Act - United States legislation that defines a comprehensive framework to protect government information, operations and assets against natural or man-made threats.
FMD	Fuels Manager Defense application
FOB	Free/Freight on Board. A definition of price basis and condition upon which product changes ownership. A FOB price at a designated location indicates that the seller will make the product available for pick-up at the stated location at the stated price. The new owner (buyer) assumes all further transportation costs. (the cost of ground fuel is bid on with FOB built-in)
FOC	Full Operational Capability
FPQ	Fixed Price Quantity
FPR	Final Price Revision
FSC	Federal Supply Class code. 4-digits long and is the beginning of an NSN.
FSII	Fuel System Icing Inhibitor (Fuel additive)
FSII	Bulk Fuel Regional Buy name referring to a location in need of the FSII additive
FTP	File Transfer Protocol is used to transfer data from one computer to another over the Internet, or through a network.
Fund Code	Found on a non-capitalized DD1155 bulk fuels order. Used in conjunction with the Signal Code. The Fund Code is a 2-digit number provided by the requesting activity. All Non-cap orders require a Fund Code with the exception of those with a signal code of "M", which indicates a free issue.
GFM	Global Freight Management – SDDC's database for common carrier transportation rates
GOCO	Government Owned/Contractor Operated
GOTS	Government Off the Shelf
GUI	Graphical User Interface



HTML	HyperText Markup Language
HUB (blue)	Air Force transactions feed into here
HUB (purple)	Joint services transactions feed into here
HUBZone	Business classification – a company that is located in historically underutilized business zones. These are determined by geographic location.
HWC	Hardware Configuration Item
I	Government owned truck
IA	Information Assurance
ICAO	International Civil Aviation Organization - 4 character code for a commercial airport
ICIS	Integrated Consumable Item Support Model
IDD	Interface Design Description
IDIQ	Indefinite Quantity, Indefinite Delivery contract
Incident	A system/application “minor” change/fix request submitted by users/developers as defined within the Enterprise Change Request Tool (ECRT), which replaced the Issue Tracking Solution (ITS) Tool in 2013
Inland West	Bulk Fuel Regional Buy name
Intermodal	An intermodal tank container is a delivery device consisting of a tank with a capacity ranging from 4,500 to 6,500 gallons nestled in a steel frame cage and able to be transported by wheel, rail, or water. Intermodal containers are normally used for delivery of bulk products (lube oils, FSII, and aviation gasoline) where the requirements and parcel sizes are small.
Interruptible	Type of pricing for natural gas when supply can be interrupted at any time by the supplier
IP	Into Plane
IP	Implementation Procedures
IP	Internet Protocol is the communications protocol of the public Internet
IP Address	Internet Protocol address is a computer network address
IRS	Interface Requirements Specification
IT	Information Technology
ITS	J6SS Issue Tracking Solution (ITS) Tool, which was replaced by ECRT in 2013
JDBC	Java Database Connectivity
JDK	Java Development Kit
JLink	Java application that serves as the primary interface between OED and PC&S RM, Bulk RM, and the Scheduler
JP-5	Jet Propellant 5. Marine aviation fuel with a flashpoint of 140 degrees F, which is substantially higher than commercial aviation turbine fuels. It requires military-unique additives.
JP-8	Jet Propellant 8. Kerosene-based with a flashpoint of 115 degrees F. It can be used in all government diesel fueled vehicles.
JPTS	Jet Propulsion Thermally Stable
K	Tanker
KDAAC	Unofficial term meaning a ship DODAAC
KG	Kilograms
KTR	Contractor
Laid-down cost	The total cost of product delivered to the end-user location. Product cost plus transportation cost plus additive cost plus “other” costs.
LAN	Local Area Network
LCCB	Local Configuration Control Board
LDC	Local Distribution Company/Center - natural gas supplier
Lift	The quantity of fuel usage. Expressed in the units of issue applicable to the line item (e.g. gallons, metric tons)

Limited-interruptible	Type of price for natural gas when supply priority is set to be partially interruptible by the supplier
LIMS	Laboratory Information Management System (QARs use this)
Linear Programming	A modeling methodology which can be used to represent a situation such as in the BEM model where numerous possibilities of conditions apply. LP will readily determine the “best” (least costly set of supply/shipments) that will satisfy the required demands.
LP	Linear Programming
LP	Liters
LP/MIP	The composite modeling methodology, used in the BEM, to determine the “best” awards while complying with complex offer conditions (e.g. offer B is available only if offer A is also taken)
Lubes	Bulk Fuel Regional Buy name
MAC	Mission Assurance Category
MDQ	Maximum Daily Quantity
MGQ	Monthly Guaranteed Quantity
MIL-SPEC	Military Specification
MIP	Mixed Integer Programming
MIPR	Military Interdepartmental Purchase Request
Misc	Bulk Fuel Regional Buy name servicing emergency situations
Mixed Integer Programming	A modeling methodology which extends LP to permit the use of selected variables which can assume only integer values. In the case of the BEM, such variables are used to represent “logical” conditions and are usually restricted to the binary values zero (0) or 1 (1).
MM	Maintenance Manual
MNS	Mission Need Statement
Mode	Mode of transportation (Tanker (K), Barge (B), Pipeline (P), Rail Car (C), Tanker (T))
MPS III	Mathematical Programming System
MTMC	Military Traffic Management Command - repository for common carrier rates. : MTMC was changed to SDDC in 2016
NG	Natural Gas
NIIN	National (or NATO) Item Identification Number – 9-digit numeric code that uniquely identifies an item of supply in the NATO Codification System (NCS). The NIIN is often prefixed by the NATO Supply Class (NSC aka FSC) to form a National Stock Number (NSN); however, the NIIN alone uniquely identifies the item, the FSC merely adds context by indicating the general classification of the item.
Non-Capitalized	A non-capitalized fuel order is one that is customer owned.
Non-common carrier	Transportation company that sends fuel by Barge and Pipe
Non-Dedicated	Common carrier pipeline
NOTAM	Notice to Airman
NATO	North Atlantic Treaty Organization also called the North Atlantic Alliance
NSN	National (or NATO) Stock Number. An NSN is created by joining an FSC (Federal Supply Class) code with a NIIN (National Item Identification Number) by a “-“ to create a 13-digit numeric code that identifies all the “standardized material items of supply. <b>FSC NIIN</b> <b>6645-00-123-4567 = NSN</b>
O&R	Ordering & Receiving
OCD	Operational Concept Description
OCONUS	Outside Continental U.S.

OD	Operational Description
ODBC	Open Database Connectivity - A Microsoft protocol for setting up connections between databases
OED	Oracle Energy Downstream
OET	Offer Entry Tool – used by fuel Vendors to submit bids / bid packages in response to DLA-Energy solicitations
Offeror	A potential Contractor/bidder
OGF	Oracle Government Financials
OM	Computer Operation Manual
OPSEC	Operations Security
Origin Offer	An offer to provide fuel product to the government (i.e. the government assumes ownership), FOB at a “source” facility, which is a refinery or terminal owned by the Offeror.
P	Pipeline
P10	Order Transaction (DFAMS)
P20	Shipment Transaction-signifies acceptance of fuel by the government (QAR) (DFAMS)
P21	Shipment Transaction of a DLA-owned product from a DFSP to an Activity
P22	Shipment Transaction from one DFSP to another
P2W	Prices-to-Web – a module of EPST that contains current price escalation data for every contract lineitem on every fuel contract. Each contract lineitem is tied to a particular escalator (e.g., Platt’s, OPIS, etc., which track market fuel prices in specific geographic areas) and a base reference price which is taken at the time of fuel solicitation and ultimate contract award.
P30	Receipt Transaction - for fuel being delivered (DFAMS)
P31	Receipt Transaction in response to a P21, mandatory for barge and pipeline
P32	Receipt Transaction in response to a P22, for all modes of shipment except tankers
P3T	Receipt Transaction in response to a P22, for a tanker
PA	Product Assurance group at DLA Energy
PAP	Posted Airport Prices - price per gallon charged to fly-in customer
PC&S	Post, Camps & Stations
PDF	Portable Data Format - types of files read by Adobe
pin	the act of electronically attaching one's signature to a form
PIN	Personal Identification Number (the PIN links to an electronic signature)
PKI	Public Key Infrastructure
PO	Purchase Order
POC	Point of Contact
PORTS	Paperless Ordering and Receipt Transaction Screens
PQIS	Petroleum Quality Information System - database used to track the quality of Military specification jet fuels and naval distillate fuel purchased by DLA Energy. The PQIS database covers three types of jet fuel (JP4, JP5, and JP8) and contains information on report date, contractor, crude source, refining technique, destination, quantity, additives, and all physical and chemical properties as stated in the fuel specifications.
PR	Purchase Request
Price Escalation	Allows the price paid to a Contractor to float with the market
Product	A military fuel meeting particular quality specifications (e.g. JP4, JP8, F76, etc.)
PT	Test Plan
PTR	Program Trouble Request as defined within the Issue Tracking Solution (ITS) Tool (replaced by “Incident” within the ECRT)
Purchase Program	Geographical area dealing with a (non-bulk) single fuel type
Purchase Program	Group within a geographical Buy dealing with a (bulk fuels) single fuel type

QAR	Quality Assurance Representative (accepts ownership of fuel for gov't at the refinery)
QSR	Quality Surveillance Representative (accepts fuel at the delivery point)
RDC	Requirements Data Call
RDS	Report Distribution System
Requiring Activity	A location having a demand for fuel. Also known as a demand location. Usually the location is a military base, but it may also be a DFSP, Federal activity or commercial location.
RI	Referential Integrity
RIC	Record Identification Code (used by DFAMS)
RFC	Request For Change - A system/application "major" change request submitted by users/developers as defined within the Enterprise Change Request Tool (ECRT), which replaced the Issue Tracking Solution (ITS) Tool in 2013
RM	Requirements Manager
RMF	Risk Management Framework - the unified information security framework for the entire federal government that is replacing the legacy Certification and Accreditation (C&A) processes within federal government departments and agencies, the Department of Defense (DOD) and the Intelligence Community (IC).
Route	A specific path of "flow" for moving fuel from an offer location to a demand location. A route may flow through up to five intermediate DFSPs and can be composed of one, two, three, four, five or six Arcs (single leg moves)
RT	Test Analysis Report
RTM	Regional Transportation Manager
RTRIS	Regional version of the Transportation Rates Information System (TRIS)
SAAR	System Authorization Access Request
SAP	A German-based company. <i>Systemanalyse und Programmentwicklung</i> ("Systems, Applications and Products")
SB	Small Business. A business firm meeting certain Small Business Administration criteria relative to size and revenues.
SCAC	Standard Carrier Alpha Code - four-digit identifying code for Common Carrier
SCP	Service Control Point
SCR	System Change Request as defined within the Issue Tracking Solution (ITS) Tool (replaced by "RFC" within the ECRT)
SDA	Static Dissipation (or Dissipator) Fuel Additive
SDB	Small Disadvantaged Business. A Small Business meeting specific minority ownership criteria.
SDD	System Design Description
SDDC	Military Surface Deployment and Distribution Command - repository for common carrier rates. SDDC is part of USTRANSCOM. NOTE: SDDC replaced MTMC in 2016
Set-aside	The prime contractor must be a minority-owned company
Set-aside Price	The price a small business must match (on a laid-down cost basis) to win an award of a portion of a set-aside volume. This applies if the small business did not win at its own price, but is willing to offer a price equal to the otherwise winning price.
Set-aside Quantity	That portion of the required (demanded) quantity at a specific demand location which is set aside for award to qualified small businesses.
SF	Standard Form

Standard Form "Solicitation/Contract/Order for Commercial Items"  
Example:

SF1449



SFTP

Secure File Transfer Protocol is a network protocol that provides file access, file transfer, and file management functionality over any reliable data stream. This protocol assumes that it is run over a secure channel such as SSH, that the server has already authenticated the client, and that the identity of the client user is available to the protocol.

Signal Code

Found on a non-capitalized DD1155 bulk fuels order. The purpose of the Signal Code is twofold: it designates the fields containing the intended consignee (Ship to DoDAAC), and it identifies the activity to receive and effect payment of bills for product received, when applicable. Used in conjunction with the Fund Code.

When the product is to be shipped to the activity indicated in Block 3, the signal code will be as follows:

Code	Explanation
A	Bill to the activity in Block 4
B	Bill to the activity in Block 14
C	Bill to the activity in the Fund Code
D	No billing required – free issue

When the product is to be shipped to the activity indicated in Block 14, the signal code will be as follows:

Code	Explanation
J	Bill the activity in Block 4
K	Bill the activity in Block 14
L	Bill to the activity in the Fund Code
M	No billing required – free issue

Sig-on-left

"Signature-on-left", located on top left section of a PR, is the electronic signature of the authorizing party within the CBU and it indicates a finalization of the data on the PR so that the data can no longer be changed or re-routed

SIOATH

Source Identification and Ordering Authorization

IOATHs

List of approved single-leg moves

SIP

Software Installation Plan

SIP

Supply Index Pipeline (Natural Gas)

SIPs

Supply Index Prices (Natural Gas)

Smart CLIN	A CLIN with routes attached to it; details what, how much, from where & how it gets there
SMTP	Simple Mail Transfer Protocol is the de facto standard for e-mail transmissions across the Internet.
Splash page	The screen that is initially shown to a user for a particular application. This screen appears before any logon process takes place.
SPIDERS	Support Planning Integrated Data Enterprise Readiness System
SPLC	Standard Point Location Code - 9 or 10 alpha-numeric code used as a unique identifier to designate locations around the world based on the latitude and longitude coordinates of the location. This code may refer to a shipping point (origin), a DFSP, or an end-using Activity.
SPS	Software Product Specification
SQL	Structured Query Language - data retrieval and manipulation language used to communicate with Oracle databases
SRS	Software Requirements Specification
SDDD	System & Subsystem Design Description
SSH	Secure Shell is a network protocol that allows data to be exchanged using a secure channel between two networked devices.
SSS	System & Subsystem Specifications
Stock Fund Price	The fixed price that the Services pay to DLA Energy throughout the fiscal year
SUPAAC	Supplementary Activity Address Code – six-character alphanumeric entry indicating the service and address of the requestor.
SWCI	Software Configuration Item
T1	High Speed Data Line
TER	Technical Refresh
TFF	Transportation Fuel Factors
Tie-in Bid	A bid which is contingent upon
TIN	Tax ID number
TOP	Take-or-Pay contract
TRIS	Transportation Rates Information System
TSN	Transaction Sequence Number
TSW	Trader's and Scheduler's Workbench – a module within SAP Oil & Gas
TT	Tank Truck
UI	Units of Issue (measurement)
UM	User Manual
US	Software Unit Specification - Any logical set or grouping of instructions to a computer, such as a module or package
USG	US gallons
USTRANSCOM	United States Transportation Command. SDDC is part of USTRANSCOM. The GFM database resides at SDDC.
V	Intermodal (fuel in a container on a ship then put into the container by truck)
Western Pacific	Bulk Fuel Regional Buy name
Whitelist	A listing of characters allowed to be input by users defined for each type of user text input. (e.g. passwords, user names, email addresses, etc.)

## **APPENDIX B - References**

As of June 2018, documentation related to all of the EPST applications is housed on the \\orgeast\ENERGY\dsc-g Share Drive under the EPST/EPST Documentation folder. This appendix lists the directory location on the Share Drive at DLA of any other documents that provided data to help prepare or were referenced within this User Manual for Prices To Web.

This appendix is not applicable to the User Manual for the Prices To Web application.

## APPENDIX C - Application Release History

Applications within EPST are updated for a variety of reasons that typically fall within the following categories: users' requests; upgrades to the operating system and/or programming language(s); and updated security specifications for DLA/DoD applications.

As of 2013, the requested updates, which are initiated by the users and/or developers, are processed through the Employee Activity Guide for Labor Entry (EAGLE) Request Tracker Enterprise Change Request Tool (ECRT). A "Request for Change (RFC)" is a change to an application to add to or alter existing functionality. The term RFC is synonymous with the historical term System Change Request (SCR). An "Incident (INC)" is an interruption to an IT service or reduction in the quality of functionality of an application. The term "Incident" is synonymous with the historical term Program Trouble Report (PTR).

Prior to 2013, SCRs/PTRs were processed via the Issue Tracking Solution (ITS) Tool. As ECRT replaced ITS, some of the prior numbering system (i.e. SCR/PTR) was imported into ECRT; thus, changes to Prices to Web Application may still be referenced by "SCR" and/or "PTR".

One or more RFCs and/or INCs can be included in a particular release of the application code, which is assigned an identifying release version number. The table below depicts the versions of the Prices to Web App that have been tested and placed into production, and the RFCs/INCs that were fixed/updated in the release.

Code Release Version Number	Date	Included RFCs (SCRs) #	Included INCs (PTRs) #	Description
2021.02.05.01	18 Feb 2021		BEM-I21-0001	New Prices - Cage Code Data: Update to fill in CAGE code data for contracts.
2020.11.20.01	31 Jan 2021	P2W-C20-0001		<p style="text-align: center;">Modernization Front-end P2WEB-AZURE/CLOUD Migration (Creation of Prices-to-Web application)</p> <p>1) Migrate Prices to Web functionality to a new application as part of EPST.</p>